

Prospectus
2021/22

a.r.u. | London

Discover
Your
Future.



Contents



Welcome to ARU London	4
About Us	6
Students' Union	10
Your Lecturers	14
Our Location	16
Keeping Connected	20
Life in London	22
Open Days	26
Your Student Support	28
Entry Requirements	32
Your Journey to ARU London	34
Student Finance, Fees, and Scholarships	38
Accommodation	42
Your Future	44
Our Alumni	48
Foundation Year	50
Undergraduate Degrees	52
Postgraduate Degrees	70
Small Print	77
Course Index	79

Welcome to ARU London



Thank you for your interest in ARU London, I very much hope our university will suit your needs and requirements and will exceed your expectations of what a university can offer.



David Sexton, MSc,
CPFA, FHEA
Principal



Anglia Ruskin is a progressive university, breaking into the top 350 educational institutions in the world in 2017, and maintaining our place ever since¹. Our fantastic academics will link theory with practice in a friendly and supportive environment: just one of the reasons why our students have recorded some of the highest satisfaction rates across the university².

With two buildings in London, one in the heart of the City of London, and the other in the Docklands in East London, offering you unprecedented access to a host of potential employers and careers, ARU London is the perfect place for you to build the skills and gain the knowledge to propel you into a successful career.

At ARU London, we offer a range of undergraduate and postgraduate degrees specialising in business, law, and healthcare-related courses, all delivered alongside our employability schemes to ensure that you graduate with both an excellent degree and the employability skills to achieve your full potential.

Choosing the right university is one of the most important decisions you will make, and we invite you to find out more about us through this prospectus and attending one of our open days – this is where you will discover first-hand the passion and enthusiasm that is embedded throughout ARU London.

This is a perfect time to study at ARU London, and I look forward to welcoming you.

1. The Times World University Rankings 2017

2. NSS 2021

About Us



At ARU London, we pride ourselves first and foremost on the experiences and development of our students. We try to enhance our students' experience and development through our support and teaching. Each student at ARU London has an extensive team to support them.



Anglia Ruskin University is ranked as one of the top 40 UK universities by Times Higher Education (THE) in their World University Rankings. This is the fifth year in a row that ARU has been included, THE look at more than 1,500 universities around the globe to be a part of the World University Rankings¹.

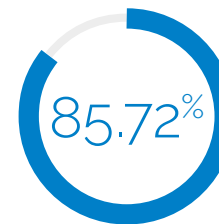


Our teaching

Studying at ARU London ensures that academic standards and the quality of learning opportunities built into your degree course are at the highest level.

We ensure that not only are our lecturers highly academically qualified, but they also boast significant real-world business experience. That's why all of our lecturers are currently working or have worked within the sector they teach. This approach ensures our students don't receive just theoretical knowledge from their textbooks, but valuable, modern, practical examples, too. Perhaps most important of all, our lecturers are all great lecturers, adept at communicating their expertise in an enthusiastic, informative way that encourages and engages students.

Our students rate ARU London highly for teaching, learning opportunities and assessment & feedback. Our results from the National Student Survey in 2021² demonstrate this commitment, as ARU London scored above the national average for quality of feedback and academic support. Our overall teaching was rated 5.78% higher than the national average.



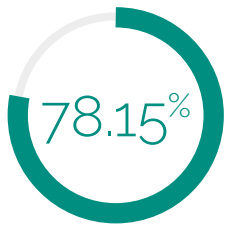
Students rate their teaching on their course at 85.72%, 5.78% higher than the average of all higher education institutions²

1. Times World University Rankings 2021
2. NSS 2021



Our students

Our fantastic academics will link theory with practice in a friendly and supportive environment, just one of the reasons that our students have recorded some of the highest satisfaction rates across our university. In the 2021 National Student Survey (NSS), ARU London achieved an 83.59% Overall Satisfaction rating, this is 8.18% higher than the national average.



1. NSS 2021 Survey

Our students rated our academic support at 78.15%, this is 4.65% above the average for higher education institutions



Your library

We understand that while textbooks provide immense support, guidance, and knowledge to students, they are often a financial burden for many. This is why we support our students by supplying the core textbook for each of your modules. We will be providing e-Books for all new students starting in 2021/22. Your e-Books are available to you as soon as you start your course. They can be accessed through our online learning platform, and on our mobile app. e-Books can accommodate various learning styles and have an interactive functionality which will save time spent scrolling through hundreds of pages or searching through a physical library. During your Welcome Week, you will learn how to access e-Books and how best to use them.



Your timetable

We've structured our courses to be taught across a unique 2 or 3-day timetable. Our timetable won't only cut down on your travel costs, making your attendance bursary go even further, but will also allow you to find meaningful part-time work throughout your studies. From this, ARU London students can begin saving towards their tuition fees or living costs. We also offer an evening and weekend study mode for all our postgraduate degrees and for selected undergraduate degrees. Our evening and weekend delivery mode can be an ideal solution if you are looking to start a degree but a standard daytime timetable doesn't work for you.



Your attendance

If you're new to the London commute, you'll soon realise that throughout your study the pennies quickly add up. All of our undergraduate students are eligible for an attendance bursary.

To be eligible for the bursary, you will need:

- All assessment submissions deadlines to have been met

If the above requirements are met at the end of Semester 1 and Semester 2, two separate payments of £250 will be paid into your bank account to support travel costs at the end of each semester.



Students' Union



What is a students' union?

We're a charity that supports students and exists to make your experience the best it can be. You get to decide how we're run and what we do. ARU Students' Union London will be making sure your voice is heard and supporting you from your first day to your graduation.



Welcome to ARU London

I am Sorin-Marius Predica, your Students' Union Vice President. I am a current student studying International Business Management, but I was also elected to be the lead representative of the Students' Union for all ARU London students.

Deciding to become a student here is one of the best decisions you can make.

Our teaching staff are extremely passionate, dedicated experts in their field, and all the additional support services and opportunities are completely focused on putting students at the heart of what they do.

As Vice President, I work for students through the Students' Union. Our Students' Union is an independent organisation that works alongside our university to make sure you have the best experience here possible.

You automatically become a member as soon as you start and can instantly gain access to everything that is on offer.

The Students' Union is your opportunity to build the university you want ARU London to be. We are here to represent you and your feedback to the university, provide professional and confidential advice, and also give you plenty of opportunities to meet other students and develop your skills.

Whether you want to apply for money to run a project or event, run in an election to become a representative or simply sit back and

find out more about the liberation and diversity support we provide, there will be something for you.

The first few weeks of university can feel a little daunting, but my number one piece of advice is to get stuck into as much as you can, through both the university and the Students' Union. If you're feeling nervous, I can guarantee you won't be alone!

The best way to invest in yourself is by investing in your education. By making the decision to study here you will be able to take advantage of so many different opportunities that can change your life.



I wish you the best of luck,

Sorin-Marius Predica, Vice President, ARU London Students' Union

angliastudent.com/london

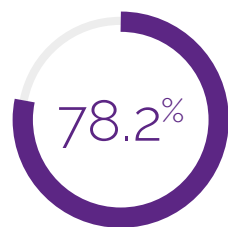
At your Students' Union, you will be able to access the opportunities to...

Lead

Our union is led entirely by students, so each year we hold an election for the Vice President. The student who wins this election becomes your voice. They gain direct access to the senior management team of the university, their own budget, and a team of Students' Union staff to support them in their campaigns to improve the student experience.

Connect

Being available and accessible to all students is a big priority for us. We understand the busy lives of students, so work hard to be as flexible as possible for you. You can connect with us over email, our website, social media, WhatsApp, phone, live chat, or through our virtual drop-ins.



Our students rated our learning community at 78.20%, this is 11.69% above the national average for higher education institutions

1. NSS 2021



Speak Up

Every single student has a voice and the right to use it. Each year we elect student representatives to gather as much feedback as they can to take forward to the Vice President or the university. Working together with our student reps, we can make real change. We also facilitate the Course Rep election process and provide training and accompany them to Student Staff Liaison Committees.

Develop

We believe that university is more than just studying. We are passionate about maximising your development whilst you're with us and have placed employability at the heart of our activity. All opportunities and roles that we offer, both paid and voluntary, will provide you with a unique and important set of skills.

Reach Out

Life can be hard sometimes with plenty of unexpected hurdles to jump over. As one of our members, you can gain access to our free, confidential, and impartial advice service. Our wonderful advisers are here to help you with any tough decisions you are faced with, both academically and personally.

How do I sign up?

We exist entirely to support you and help you get the most out of your time at university. As soon as you become a student at ARU London, you automatically become a member of the Students' Union – and the best bit? It's totally free.

To find out more, you can take a look at our website angliastudent.com/london.



8%

When asked about student voice, including feedback, opportunities to be heard, staff interaction, and the Students' Union, our students rated ARU London 8% higher than the top quartile of UK's higher education institutions.

NSS 2021

Your Lecturers

Andrew Johnson MBA, SFHEA, MInstLM, MCGI
Head of Business School



After serving in the British Army for 24 years in a senior rank, with 4 of those being leadership instructor and programme manager at the Royal Military Academy Sandhurst, our own Head of Business Department, Andrew Johnson, has owned several businesses and limited companies, as well as managed teams in the public sector. Joining ARU London in 2014 to continue his passion for teaching others, he has collected many memberships and accolades and fills in any leftover time as a published historical fiction novelist and long-distance runner, whilst also being a chairman in the education and charity sectors.

"As the Head of Business School, I firmly believe that we are not just a business school, but a leadership school too. In addition to imparting knowledge, our job is to get students 'match-fit' for the world of work. This means developing their mindset and tacit skills, such as diligence, emotional intelligence, professional behaviours, personal presentation, and agency, alongside the development of their explicit knowledge base. Our aim is to produce a well-rounded, polished graduate who can compete effectively in the modern labour market."



Tex Dunstan
Senior Lecturer

With over 20 years of experience as a leader, teacher, mentor, and award-winning business owner, Tex Dunstan, Senior Lecturer, has delivered teaching of high significance in the business sectors and to ARU London students for over 4 years. Tex is particularly interested in research, advanced professional practice in strategy, operations management, project management, business technology and information systems, with a keen eye for entrepreneurial motivations, employability and small business applications of business intelligence and analysis.

"My Business Information Systems module directly addresses the growing power, purpose, and intent of technology in business and the world. It equips business managers like you to understand how technology creates and delivers business value."

I love to engage with my students in whole-hearted and rigorous explorations of the big technology themes that businesses exploit to develop and prosper in fast-changing business environments. We do this together and always with a smile on our face!"

Kally Kadoglou M.A., Chartered MCIPD
Senior Lecturer



Kally worked as a Human Resource professional and has over 20 years of experience as a senior manager in highly commercial environments within diverse industries, both in the UK and internationally. Currently a senior lecturer and module leader for the Human Resource Management module for undergraduates, she also delivers business and personal development related seminars and lectures. Kally has interests in employability, linking theoretical and academic learning to real life experiences, empowering students' growth for greater success.

"My Human Resource Management module will provide you with the most up-to-date insights, from academic to industry practice. It will give you a strategic and operational understanding of managing human resources in both the UK and global environments."

I am passionate about student development, sharing human resource management and business insights, and bringing real-life experiences and working practices into the classroom combined with academic theories and research."

Michelle Barned MBA
Lecturer



Michelle joined ARU London in January 2019. She comes with over twenty years experience of leading operations and marketing for charities that support vulnerable adults. She has also advised startup companies on their marketing efforts. In her role as module leader for Principles and Practices of Marketing, Michelle is keen to provide active learning experiences for students that are closely aligned with global business and reflect on the diverse makeup of the student population at ARU London.

Another goal for Michelle is demonstrating how marketing theory and practice plays a significant role in everyday perception and decision making. When she isn't in the classroom Michelle enjoys walking, hot yoga, and attending charity fundraising events.

"After decades in the industry, I love sharing real-life examples that reflect theory, demystify marketing, and accelerate student learning"

Our Location

Want to study in the heart of one of the world's most exciting cities?

Our focus on employability and dedication to student development will help you get out of the classroom and ahead in the competitive job market, while simultaneously experiencing one of the truly international capitals of the world.

Our buildings

We have two buildings in London with state of the art facilities for all students to use.

Our Farringdon building is situated within the heart of central London, and our East India building is in the Docklands area of East London. Although commuting between both buildings is easy, students need only attend lectures and seminars at one of our sites, which will be allocated to them on enrolment.

Farringdon Building

Our Farringdon building is right in the heart of central London. The building is within a minute's walk of the city and the Square Mile - London's business and financial district.

Spread over a total area of 65,000 sq. ft, the building contains five floors of lecture theatres, seminar rooms, PC-equipped study areas, a library, and multiple areas for you to work, relax, and socialise.



East India Building

Opened in September 2019, the newly transformed, contemporary site in East London was part of a multi-million-pound refurbishment.

Our facilities are spread over two floors, with over 66,000 sq. ft of teaching and communal workspace. The building has some of the latest high-tech equipment, readily available for our students to enhance their studies and skills.



Our buildings have:



Lecture theatres and seminar rooms with ergonomic seating.

Smartboards for an interactive learning experience.

Computer labs available to use at any time.

Libraries, housing copies of all the core textbooks, a range of relevant publications, and online archives for each course. There are also dedicated library areas suitable for study groups, quiet study or simply catching up on your emails.

Large breakout areas equipped with computers and printing facilities.

Study pods and booths, perfect for group work or personal study.

Wi-Fi, available throughout the buildings.

A range of supermarkets and cafés nearby, for refuelling and preparing for the day ahead. We have dedicated areas for our students to eat and drink between classes too.

Remote controlled cameras and microphones that allow all seminars and lectures to be live streamed.

Keeping Connected



Farringdon Building

Farringdon - 19 Charterhouse Street, London, EC1N 6RA

The proximity of both Chancery Lane (Central Line) and Farringdon (Hammersmith & City, Circle, Metropolitan Underground lines + First Capital Connect, Thameslink, and South-eastern rail services) London Underground stations make ARU London easy to get to from all areas of London and outside of the city.

In 2022, Farringdon will also become one of the central hubs for Crossrail. When the Elizabeth Line (Crossrail) station opens, it will be one of the busiest in the UK, connecting with Thameslink and the London Underground to provide links with outer London, the home counties, the City, Canary Wharf, and three of London's five airports.

East India Building

East India - 3rd / 4th Floor, Import Building, 2 Clove Crescent, Poplar, London, E14 2BE

East India DLR station is situated onsite, with the journey from platform to classroom only a few minutes walk. From East India DLR, you can arrive in Canning Town in 2 minutes (Jubilee Line), Canary Wharf in 5 minutes (Jubilee Line and Elizabeth Line), and Stratford and Bank in 13 minutes (Central Line, Jubilee Line, Northern Line, London Overground, TfL Rail and Greater Anglia rail services). When the Elizabeth Line opens you will be able to travel to our Farringdon building within 26 minutes.

Find out more about our location's at london.aru.ac.uk/about-us/locations



Life in London

With a total student population of over 400,000, London offers an unrivalled multicultural experience and is one of the most popular student destinations in the world.



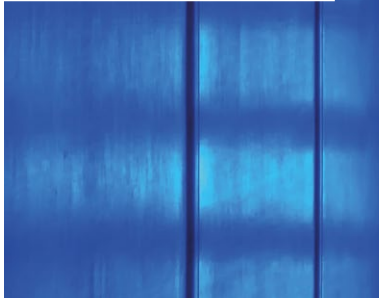
Heritage

The history of London is so rich and deep that it would be impossible to summarise it all on just this page, but London has been at the centre of history since before the Romans, making it a fascinating location for landmarks, galleries, museums, and tours.



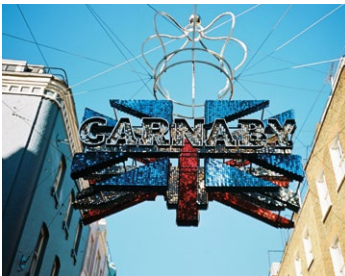
Food

As one of the culinary capitals of the world, whatever your taste buds desire, London can cater for it all. Whether you are visiting Borough Market or checking in at Chinatown, no cuisine is left unexplored.



Nightlife

There are many clubs throughout the capital that will not disappoint, as well as sell-out gigs and concerts at over 300 venues. If you're looking for something quieter, there are plenty of chill evenings happening too, such as nightly boat cruises on the Thames or comedy nights in Soho. To make it even better, at the weekends, almost everywhere in London is accessible with mainline tubes running 24-hours.



Shopping

As a cultural capital with strong international business hubs and a diverse population, London makes a standout commerce destination. Whatever your style is, London caters to all with areas such as Oxford Street, Knightsbridge, Carnaby Street, Westfield, and Bond Street, offering a mixture of retail, restaurants, cafes, cinemas, and entertainment.

Sport

With cricket, rugby, and football all originating in the UK, it's no wonder that London is a hotspot for sport. Not only can you watch just about any sport in London, but we encourage you to take part in opportunities to play throughout the capital. Lord's Cricket Ground is located near Regent's Park in central London, Wembley Stadium can be found in the west, and in the east, a stone's throw away from the East India campus, is the Olympic Village in Stratford, where the legacy of the 2012 London Olympics can be found.



Culture

Some of the most famous, popular and largest heritage gardens, royal buildings, street parties and festivals, film locations, theatre and musicals, and art shows in the world, mixed in with a pub on almost every corner, make London the place to be all year round. You'll quickly find yourself embedded into the everyday culture of London – even hopping on the tube is part of it.



Open Days

Come visit us

Our open days are easily the best way to decide if ARU London is for you. You can explore the campus, take a closer look at our facilities and, above all, meet the fantastic people who study and work here.

Throughout the day you will be able to discover our university and get an authentic feel for what university life would be like here.

84.13%

Students rated their course for challenging them to achieve their best work at 84.13%, this is 8% above the average of all higher education institutions.

NSS 2021



Online and Physical Open Days

Attend scheduled talks and guides throughout our open days to get a real feel for university life at ARU London from our students and staff, with the opportunity to ask questions on ARU London life and study.

We are currently running both online and physical open days, you can sign up and choose which event you would like to attend on our website. Our online days are reflective of our physical ones and are just as great.

During the event, you will be able to hear from our Principal, David Sexton, as well as specialist academics applicable to the courses you are interested in.

Our online open days are live on Zoom. Once you have signed up, we will email you the details on how to join the event, as well as preparation emails reminding you of the schedules and upcoming events.

What do we have planned?

Here are some of the things you can expect at an online open day:

Welcome Talk

A brief overview of ARU London and insight into the things you can see and do at our university.

Meet our course leaders

Find out about the courses that interest you and meet the people who teach them to get a real sense of what we can offer you.

Advice sessions

Want to know more about finance, submitting an application, or career opportunities? We will cover all of these, and other topics related to university living and studying as well.

Students' Union

The Students' Union is at the heart of student life. Find out about its many clubs, societies, events, and support services.

Talk to our staff

Members from different faculty teams will be present to say hello and answer your questions.

Campus tours

We also have campus tours available for those who would like to experience the university first-hand. Here you'll be able to explore the local area and visit our fantastic campuses in London, get familiar with transport links and city life, and soak up the atmosphere of ARU London. Aren't able to take a physical tour? Travel around and experience our campus virtually here: london.aru.ac.uk/about-us/locations

Book a tour now:

enquiry@london.aru.ac.uk



Your Student Support



The reason I chose ARU London was that I was impressed by the website, facilities and resources available, standard of teaching, and diverse nature of the student population. I am also happy with the level of support from Student Services and the iCentre. The ARU London app and website is excellent too, they have everything I need in one place.

Kamal Razvi
MSc International Marketing

Student Wellbeing

At ARU London, your wellbeing is important to us.

We aim to ensure all students are fully supported throughout their studies.

Offering specialist information, advice and support to students with mental health difficulties, ongoing medical conditions, disabilities and specific learning difficulties, the Student Wellbeing team are here to talk to about any personal circumstances affecting your studies.

Our support is not just our word, but our actions. This is why we are proud to have been ranked 36th in the world for our achievements in Good Health and Wellbeing in the Times Higher Education (THE) 2021 Impact Rankings¹. Not only this but we have also been ranked in the top 200 HE institutions in the world for reducing inequalities, reflecting the ambition at the very heart of our university. This ranking is based upon our student and staff demographics and the measures we have in place to promote equality and tackle discrimination¹.

¹. Times Higher Education Impact Rankings 2021, Anglia Ruskin University.



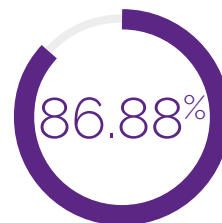
Director of Studies

The Director of Studies Office is here to help you with all of your academic progression needs from admissions through to graduation. We have dedicated advisors available on campus and through a variety of different platforms to help you along your journey at ARU London.

The team can be a helping hand when it comes to needing additional support for deadlines, progression and academic choices.

The Director of Studies Team are here to assist if you need:

- An extension to a deadline for your assignments
- Advice after failing an assessment due to exceptional circumstances beyond your control
- To change to another course
- To take a break from your studies due to a change in personal circumstances
- Support in maintaining academic integrity
- A plan on how you can progress to the next level of your studies
- Further academic support from a tutor on assessments or resits



Students rated the organisation and management of ARU London with 86.88% satisfaction.

NSS 2021



Wellbeing Advisory Service

Our wellbeing student advisors are here for you through any emotional and/or wellbeing difficulties that you may have during your time at ARU London.

Wellbeing student advisors will listen to your needs and will work with you to devise a plan of support. This may include liaising with and referring you to relevant internal and external services.

If you would like to discuss your wellbeing needs further or wish to access a Wellbeing Advisor prior to starting at ARU London, please self-refer by emailing us: studentwellbeing@london.aru.ac.uk.



Counselling Service

Counselling is a therapeutic process that provides you with a safe space to talk through any difficulties or life challenges you may be experiencing, such as:

- Low mood and anxiety
- Bereavement
- Low self-esteem
- Family/relationship difficulties

Our counselling team are all professionally qualified and adhere to the British Association of Counselling and Psychotherapy's (BACP) ethical framework and engage with external supervision as per BACP's good practice.



Disability and Inclusion Service

The Disability and Inclusion Service Team supports students who have a learning condition and/or long-term medical, physical, and/or mental health condition.

We implement reasonable adjustments for students to ensure that no one is disadvantaged during their studies.

The Disability and Inclusion Team can also advise you about Disabled Student's Allowance (DSA) and whether you are eligible to apply for it. We can also provide information about more support you can receive if you have been recently diagnosed with a disability, long-term health condition or learning difficulty.



Your iCentre

The iCentre is our core information centre. Within our iCentre, we have a team of Student Advisors that are here to support the non-academic side of your studies. Our Student Advisors are trained to advise and provide information on all areas of student life at ARU London. Whatever your query, they are always happy to help or direct you to the most suitable team within the university via email or face-to-face at our help desks.



I am thankful for the iCentre team for always being available to answer the numerous questions I had for them on a weekly basis.

Memory Kwablah
MBA International



Personal Tutors

You will be allocated a Personal Development Tutor at the start of your course. This will be your first point of contact for questions about your studies. Regular sessions with your tutor ensures they will be up to date with your academic progress and able to offer insightful guidance to assist you in reaching your full potential.



Learning Resource Centre

Our dedicated Learning Resource Centre (LRC) team are here to support your studies. We provide support on learning platforms such as VLE (Online Learning), Kortext, Zoom, Digital Library, myARUL App, and Microsoft Office. Students can always pop into our LRC Live Zoom Chat to receive face-to-face support. The LRC team also run workshops on Microsoft Excel, Word, PowerPoint, and can advise students on referencing and academic library databases.



Welcome Week

Our student journey approach to Welcome Week helps students to develop skills and knowledge at their own speed and in their own way. This means considering all the different stages a student goes through during, before and beyond Welcome Week. ARU London's strategy is to ensure a good flow of consistent and well-timed messages to prepare you for life at university. The ultimate purpose of Welcome Week is to orientate students and welcome them. However, Welcome Week is also designed to make students aware of what is expected at university, give students the tools to become independent learners, ensure students are empowered to succeed, raise awareness of information that is freely and readily available when they need it, and encourage students to make friends and create networks. Welcome Week is the beginning of your journey.



The VLE is great for job adverts, as they have a wide range of connections, and you may not necessarily see some of the jobs on there on other sites.

Reem Gulamali
Bsc (Hons) Business and Healthcare Management

Entry Requirements



A LEVELS

Grade	Tarrif points
A*	56
A	48
B	40
C	32
D	24
E	16

AS LEVELS

Grade	Tarrif points
A	20
B	16
C	12
D	10
E	6
E	16

ARU London's standard offer is 96 UCAS tariff points from 3 A Levels, e.g. CCC

Alternatively, ARU London asks for:

- Irish Leaving Certificate: BBCCC.
- Scottish Highers: BBCCC.
- International Baccalaureate Diploma: 24 points.

Applicants applying with alternative qualifications, either from the UK or abroad, can [visit our website](#) for a detailed overview.

If your qualification is not listed on our website please contact our admissions to check eligibility.

All applicants are required to have at least 5 GCSEs at C/4 or above, including English and Maths. Students whose first language is not English and have not previously studied in the UK are required to have IELTS 6.0 or equivalent.

Our published entry requirements are a guide only and our decision will be based on our assessment of your overall suitability for the course. We treat everyone as an individual which means we will look at your whole application, including any relevant work experience and personal circumstances, as well as your educational qualifications.

Please contact admissions@london.aru.ac.uk for more information.

Your Journey to ARU London



Undergraduate applicants

To apply to study for a full-time undergraduate course, all applications from UK and EU students should be made through the Universities and Colleges Admissions Services (UCAS). Go to ucas.com and click "Apply and Track" to use the online application system.

When to apply

The closing date for the submission of on-time applications for Home/EU applicants is in January. We will continue to consider applications made through UCAS after closing as long as places remain available.

Our UCAS codes

When applying to one of our courses via UCAS, please enter our unique institutional code and your chosen course correctly.

The institution code for ARU London is L63. You can find our UCAS course codes in the course profiles starting on p55.

Postgraduate applicants

Candidates wishing to enrol on a postgraduate degree should complete an online application through our website, please see the direct link to the right.

Jan-Sept	Research courses, attend open days, plan your application.
September	UCAS cycle opens. Submit applications to universities.
January	UCAS deadline, the last point at which universities give equal consideration to applications.
February	Apply for student finance support.
March	Most offers will have been made by universities.
June	Firm and insurance choices are decided by students.
August	Results day, confirmation, and clearing begins.
September	First day at ARU London.

Visit our website to create an application here: london.aru.ac.uk/admissions/how-to-apply.

You can also apply via UCAS using the relevant course code, which are in this prospectus.



English language requirements

To demonstrate proficiency in English language, ARU London recognises several formal tests. ARU London have partnered with Password and Duolingo to deliver computer-based English Language Tests.

For the Password test applicants must achieve an average of 6.0 with 5.5 in each sub-test for an undergraduate degree and 6.5 average with a minimum of 5.5 in each sub-test for a postgraduate degree.

For the Duolingo English Test, applicants must achieve an average of 100 for undergraduate entry and 110 for postgraduate entry, and no less than 90 in all sub-scores (Literacy, Conversation, Comprehension, Production).

Please see our website london.aru.ac.uk/admissions/english-language-requirements for details of the scores required from the most widely available English language tests (if the test you have taken or will soon be taking is not listed, you should contact us to check we recognise this particular test and for details of the scores required for admission).

If you have any questions, please email admissions@london.aru.ac.uk

Brexit

You may already be aware that the UK left the EU on 31 January 2020. The UK was then in a transition period until 31 December 2020.

If you were not living in the UK by this date, unfortunately, you will not be able to study at ARU London at this time. If you were living in the UK before the end of the transition period, you will be able to continue to reside, study and work in the UK under the EU Settlement Scheme.

The deadline for most people to apply to the EU Settlement Scheme was 30 June 2021. However, if you have family in or from the EU, Switzerland, Norway, Iceland or Liechtenstein (residing before the transition end date) or have 'reasonable grounds' for why you did not apply (such as medical reasons) you may still be able to apply. You can also apply if you already have pre-settled status, and you're applying for settled status. Please read more on eligibility on the government website: www.gov.uk/settled-status-eu-citizens-families

If you have already been granted EU Settled or Pre-settled status you will need to send us a 'share code' so that we can check your status online. Please provide this to us during the admissions process.

Student Finance, Fees, and Scholarships

Our fees

Our fees are subject to change at any time and are reviewed annually – this includes changes due to government policy. As of June 2021, our tuition fees are:

Foundation year

£9,250 per year

Undergraduate degree

£9,250 per year



Postgraduate degree

£8,500 per course

Student loans

As a student, you are eligible for loans from Student Finance England to support you while you study; together these are your student loan. Your student loan comprises a tuition fee loan and a maintenance loan, and a postgraduate loan if applicable.

If starting your first undergraduate degree in 2021/22, you'll be on Plan 2 for your student loan. For this plan, you won't repay any of your loan back until you earn over £27,295 per year pre-tax.

The threshold for how much you need to earn to repay your loan changes annually in April. This information is true as of June 2021 but is subject to change.

Maintenance loan

As well as a tuition fee loan, you can apply for a maintenance loan from Student Finance England too.

The maintenance loan you receive depends on:

- Where you live when studying
- Your family household income

Tuition fee loan

Tuition fee loans are obtained from Student Finance England and are used to pay the cost of your tuition fees.

You can apply for a Tuition Fee Loan through Student Finance England.

Please refer to the government page on student finance to check deadlines and eligibility: www.gov.uk/student-finance.



Postgraduate loan

The postgraduate loan (PGL) is a loan of up to £11,570 for new postgraduate students starting in 2021/22. You may be eligible for a PGL if you:

- Are aged under 60 on the first day of the academic year.
- Don't already hold a master's qualification (or equivalent or higher-level qualification, i.e. a Doctorate).
- Are a UK National or individual with settled status in the UK or ordinarily resident in the UK and Ireland for 3 years on the first day of the first academic year of your course.
- Or are an EU national, have the residency status of refugee, humanitarian protection, EEA or Swiss migrant worker, or a family member of any of the previous categories or a child of Swiss national or Turkish worker.

You will be able to apply for a PGL on the Student Finance website. If you already have an account with Student Finance England from an undergraduate loan, you should use this to apply for your PGL. If you are eligible for the PGL, it will be paid directly into your UK bank account in three equal instalments each academic year.

You will not start paying back your postgraduate loan until you pass the threshold of earning over £21,000 per year pre-tax, as of June 2021.

EU Applicants

If you're starting a course on or after 1 August 2021, you must have settled or pre-settled status under the EU Settlement Scheme to apply for student finance.

Grants and extra support

Depending on your circumstances, students can gain further governmental support such as:

- Universal Credit
- Childcare Grant
- Parents' Learning Allowance
- Adults Dependants' Grant
- Disabled Students' Allowance and disability-related support
- Advanced Learner Loan

Undergraduate scholarships

We offer scholarships before, during and after your undergraduate studies.

Entry Scholarship

We encourage all of our new applicants to apply for our Entry Scholarship.

The scholarship includes £1,000 being reduced from your first-year fees. To qualify for application, you must have achieved:

- 144 (AAA) UCAS points, if you are from the UK/EU.
- A+ grade or a minimum of 80% or GPA 5.0 in your A-Levels or equivalent qualifications, if you are an international student.

Top Achievers

Scholarships of £2,000 are available for the overall top achievers in Year 0 (foundation year), Year 1, and Year 2.

The winners are presented with their scholarships during our Top Achievers event which is hosted twice a year. The scholarship is applied to your tuition fees for the next academic year.

Find out more about our scholarships at london.aru.ac.uk/admissions/scholarships

Postgraduate scholarships

Entry Scholarship

Similarly to our undergraduate Entry Scholarship, we offer a Postgraduate Entry Scholarship with £1,000 off your entire course fee if you achieve a First Class honours degree from a university in the UK.

Master's Scholarship Programme

Each year, we provide several scholarships throughout our 3 intakes. The successful applicants will receive 50% off their tuition fees, a scholarship worth £4,250!

To apply, applicants must write 750+ words on why they wish to study for a postgraduate degree at ARU London.

Alumni Scholarship

If you graduated with an undergraduate degree at any ARU campus, we offer £2,000 off your entire course fee when you enrol as a postgraduate student with us.

Please note that only one scholarship can be applied per student. The scholarship with the highest value will be taken into consideration.

Accommodation



Whilst we do not have any halls of residence on campus, we can direct you to our preferred partners who can offer various types of accommodation within an easy travelling distance of ARU London.

In London there are many different types of student accommodation to suit every budget, style, and preference. The main types of student accommodation consist of private student halls, house or flat shares, bedsits/studios, and lodgings.

Who do you want to live with?

Sharing a house in London can be brilliant, but there are a few things to consider before signing your contract. Choosing the right people to live with is important for your wellbeing, studies and overall life in London, and while it is ideal to find friends to live with, this isn't always easy if you're moving to a new location.

Spend time discussing what you all want out of your living situation as housemates. It's important to make sure that your lifestyles don't affect one another. This discussion should include rent and bills and other monetary commitments you may want to share, as well as location, aesthetics, amenities, facilities, room sizes, and/or parking.

It can be easier to find a whole house as a group than a room as an individual, so if you're looking for potential housemates, please contact our iCentre (icentre@london.aru.ac.uk) and we can buddy you up with other ARU London students.

Shop around

Don't immediately accept the first place you see, make sure you look around before you decide and do your research. View a house in person before signing, pictures can be very different to the real thing, and it is best to experience the house first-hand.

Set a budget

Create a minimum and maximum figure of the amount you are willing to pay for rent and bills, this will help make financial decisions when weighing your options.



Near or far

Know what type of place you want to live in and what area. Check out how easy it is to commute to the campus and back, and how close you are to amenities, such as shops and healthcare practices.

Making time

Unless you are happy to relocate multiple times, remember to keep in mind that you will need accommodation for however long you are studying.

Ready to sign?

If you've found a place, make sure you read the contract thoroughly before agreeing to anything. Here is an overview of things to check: www.studentpad.co.uk/housing-guides/before-you-sign.

Make sure your deposit will be protected in a recognised scheme, and only pay the agreed rent and deposit amount – it is now illegal to charge referencing or agency fees: www.gov.uk/government/collections/tenant-fees-act.

Your Future

Our degrees allow you the opportunity to graduate with the required work ethic, finely tuned analytical skills, problem-solving abilities, and the ambition to overcome challenges.



The Employability Scheme at ARU London is a very unique, professional, and positive experience, especially for the BAME community in the UK. The Employability Team's advice on CV and interview preparation, networking opportunities with graduate employers, and IT training have assisted me towards my career goal and in securing my graduate role.

Nagla Abdalla
MBA Health and Social Care

Employability-focused courses

Research suggests that employers find that many UK graduates are not fit for the working world. With this in mind, all of our undergraduate degree courses include modules that help to build upon vital attributes for student and graduate employability.

Not only this, but our courses are also designed closely with key employers to align with the needs and opportunity gaps in their industries.

In addition to our degrees, we have resources to support you to further your aspirations and opportunities.

Our Employability Team

We have an in-house Employability Team who work in-person and online to ensure you can be your best and fulfil your career potential

We want you to be able to have the means to prepare to achieve your ultimate career goals while studying at ARU London, and to do this we equip each student with tools to manage their career.

This includes:

- Giving you advice and helping you find the right career, course, or training route to enable you to progress into rewarding graduate employment or postgraduate education.
- Helping you understand the skills, values, beliefs, ambitions, and experience you already have that will meet the specification for ideal job roles.
- Identifying gaps in your knowledge, training, and experience required for your dream role.

- Putting a plan in place so by the time you complete your degree you are equipped to successfully apply for that promotion, graduate employment or further education position.
- Equipping you with confidence-building skills to develop your business networking, online presence, and career opportunities.

We provide you with practical help including:

- CV building
- Interview preparation
- Applying for jobs
- Understanding job adverts
- Mock interviews
- Writing job letters
- Psychometric and aptitude tests
- Coaching

Employability Passport Scheme

Our popular Passport Scheme helps you develop your career management skills. Complete your Bronze, Silver, and Gold Passports at ARU London to help you progress into a fulfilling graduate role or postgraduate study. Celebrate your Passport success at the ARU London Employability Award ceremonies in front of fellow students, academics, family, friends, and potential employers looking for talent.

Online career resources

Our Career Zone section online is full of great resources, including videos, an interview simulator, and industry reports.

We bring industry and employers to you

ARU London partners with dozens of prestigious companies and businesses to provide our students with advice, motivation, information, and skill developing opportunities to strengthen applications to graduate employment roles. Our partners help develop our authentic assessments that enhance the real-world knowledge we give you for employment.

Employer events

Meet graduate employers through our industry exposure sessions, in-class employer visits, careers fairs, and awards ceremonies.

Internships

We also have an internal internship programme open to final year undergraduate and postgraduate students. These have included work with our foundation courses, employability team, and iCentre.

Paid SU opportunities

Our Students' Union often has paid roles available that offer leadership experience and the opportunity to expand your communication, management and organisational skills within an educational institution and formal setting. Not only this, but you get to work and interact with students like yourself and help improve and input ideas into the union and university.

Make your part-time work count

We can help you develop and highlight the transferable skills you're gaining in any job role to enable promotion and graduate opportunities for your future, as well as building your CV up.

Volunteering

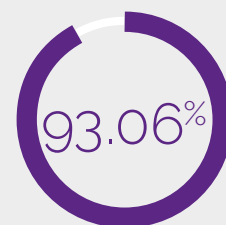
We can support you to access voluntary opportunities to demonstrate the skills you need for success in your chosen graduate role, along with any part-time roles you may want while studying.

Alumni

Our support doesn't end at graduation. We continue to support you to develop your career management skills and provide opportunities for you to share your successes to inspire the next generation of students.

Job Opportunities

Each week we update our job boards and available graduate employment opportunities online for all students and alumni to access and can give CV, cover letter, research, and interview and assessment advice and simulations to increase chances of success and build your confidence in the relevant career market.



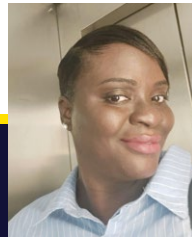
The timetable works perfectly for me

NSS 2021



Our Alumni

Memory Kwablah
MBA International



I came across a gentleman who was enthusiastically advertising postgraduate courses at ARU London. At first, I was worried as I had not been a student for over a decade and didn't think I would have retained any knowledge. I also thought I would be the oldest one there, being in my 30s, but the gentleman extolled all the virtues of studying as a mature student and encouraged me to take a chance.

I finally decided to apply for the MBA International course after a few days of pondering on it. Initially, I saw MBA International as something to keep my mind occupied while I was a stay at home mum and job hunting. However, it became an educational journey for me.

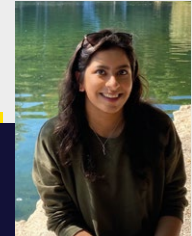
During Welcome Week, I noticed the excited chatter of people who looked similar in age to me or older. This boosted my confidence and made me feel at ease, it gave me the encouragement I needed to embrace the mature student lifestyle.

The first month of classes were difficult as I learnt to juggle motherhood and my studies, but I felt supported by the structure of the timetable – lectures and seminars were in the evenings so I had time to spend with my son during the day.

I found the classes to be well organised, and enjoyed how the modules were introduced and then expanded upon weekly. The assessment preparation from lecturers was in-depth, and they were always willing to help.

My main highlight at ARU London was when I was awarded Top Achiever for the HR Management modules. This meant I had the highest score for the whole module, which was amazing as the module really opened my eyes to the wide and varied ways HR management is practiced globally, and so my passion, fascination, and development being recognised meant a lot.

Reem Gulamali
BSc (Hons) Business and Healthcare Management



My course's flexibility meant I was able to work alongside studying. By having lectures twice a week, I was still able to work part-time and gain experience. My course was the only practical business and healthcare management course in London, which was particularly useful for me as I wanted to stay working in a healthcare setting.

Being rewarded with two Top Achiever awards was definitely a highlight for me and I enjoyed all of my modules, in particular the Business Information Systems module, as well as Principles and Practice of Marketing.

Being a student ambassador gave me extra experience in communicating with fellow students who were new to the university. I also came second place in the first ever Vice President elections at the Students' Union, which gave me the opportunity to meet many new people and work towards getting students' voices heard.

I improved my essay and report writing skills through completing assignments regularly. I also learnt about the key business functional areas, as well as doing various other healthcare modules. It gave me the chance to do research into various topics.

Cathleen Summers
BSc (Hons) Business and Law



I very much enjoyed my Business and Law course because it had structure and has helped me plan and allowed me to organise myself. I'm especially happy to start my International Project Management postgraduate degree as I look forward to improving my knowledge and continuing my studies at ARU London - I have already organised WhatsApp groups for all my modules!

Winsome Odusina is a great teacher, I always felt heard and supported by her and really enjoyed being a part of her Build a Business module. I also enjoyed playing the Business Strategy Game because it involved group work too and I always enjoy working with my peers as a team, I get so much motivation from colleagues, we all have different inputs and different ways of thinking. My favourite thing

about ARU London is meeting new people and doing group business-related work.

The biggest highlight of my time at ARU London was completing a Microsoft programme online and being invited to the Top Achievers evening. It was a lovely evening and I felt honoured to be able to shake the Principal's hand and receive applause. It was a very honourable and great evening.

I applied to the Master's Scholarship programme after reading about it in the alumni email newsletter and was highly intrigued. It has been great to secure a scholarship as it has boosted my motivation and confidence, which I will apply to my master's degree. Another advantage is that I have less to pay for my course.

Foundation Year



For students who wish to undertake a foundation year or do not meet the standard entry requirements for admission to one of our undergraduate courses, we offer the option of an extended, four-year course with a foundation year for all courses, excluding LLB Law and Business and Events Management.

A foundation year prepares students for the transition to university life and studying at degree level by developing skills necessary for success which include writing, data handling, public speaking, working in teams, and self-reflection.

During term time, students engage in 12 hours of classroom-based activities and are expected to engage in a significant amount of guided independent study outside of the classroom.

Assessment

Varied assessments take place throughout the foundation year and can take the form of a written report, online test, group project and/or presentation.

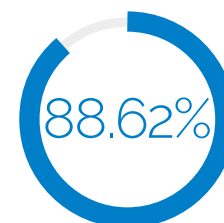
Foundation year modules

The Skills for Higher Education foundation module is a 120-credit module made up of the following 15-credit components:

- Research Skills 1 and 2
- Professional Development 1 and 2
- Data Skills 1 and 2
- Communication Skills 1 and 2

Skills and development

- Development of academic skills set
- Improvement of Maths and English skills and knowledge
- Development of personal, professional, and employability skills



My course has provided me with opportunities to bring information and ideas together from different topics.

NSS 2021

Undergraduate Degrees



At ARU London, we are extremely passionate about developing and sharing knowledge. We hope to advance the knowledge of our students through our ardent commitment to the education we deliver.

Quick facts

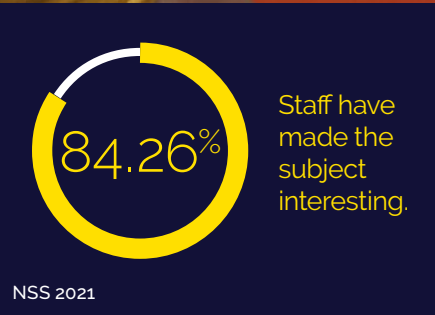
Campus: London

Duration: 3 Year or 4 years (extended study)

Mode: Full-time

Available Starts: September, January, May

2 or 3 day a week timetable



Study Options

All undergraduate courses are offered as full-time study for 3 years, or 4 years as an extended study option. Across our courses and the modules within them, we aim to provide a relevant and comprehensive education. In addition to providing students with a detailed grounding in theory, there is a great deal of emphasis on the practical side of learning. Many of our academic staff remain actively involved in business practice which enables them to keep their modules relevant and stimulating.

Alternative Study Mode

If the standard daytime study mode doesn't suit your needs, we also offer an evening and weekend study mode. This comprises of two evening sessions and a full day session at the weekend. The courses offered on this alternative study mode are full-time and have the same number of classroom hours as the standard daytime delivery.

To see what courses are available on the alternative study mode, please see more information on our website - london.aru.ac.uk/courses



Students rated their overall satisfaction of ARU at 83.59%, 8.18% above the average for all higher education institutions

ALHET School

(Accounting and Finance, Law, Hospitality, Events and Tourism)



BSc (Hons) Business and Events Management

UCAS codes	3 years - NN81 4 years foundation - N1N8
Institution	L63
Location	London
Available starts	September, January
Full course info	london.aru.ac.uk/courses

Key Features

- Combine the academic study of the business and events management sectors
- Develop an in-depth understanding of the event industry and the organisations within it
- Learn from events industry professionals and expand on practical knowledge and experience

Key Modules

- Event Planning and Project Management
- Event Themes and Designs
- International Event Management
- Business Strategy

About this course

The events industry dominates the media, delivers objectives, and creates positive impacts. It will very soon again fill transport systems, hotels, outside spaces, and venues. 2019 was a landmark year for the industry, reporting spends of £70 billion, over 50% of spend in the UK visitor economy, providing over 700,000 jobs, and generating £165 billion in trade at business events. The chance for the UK to utilise the vitality, excitement, and business and social benefits created by events demonstrates that it remains a welcoming and open industry in a changing political and trading framework. The events industry has come far in terms of its enormous breadth, global competitiveness, expertise, and an indication of how critical it is as part of the government's strategy to kick-start the economy after the pandemic. This will be an unparalleled opportunity to use both business and leisure events to showcase the country's abilities and resources, and raise the nation's pride in doing so. Thus, driving demand for specialist graduates, who not only understand the theories of business and events management but are also equipped with practical experience.

This course is designed to prepare graduates for the business and events sector and blends both academic practices with the study of core business skills and management concepts, alongside a live project. In completing this course, students will identify career pathways and develop the professionalism to achieve them.

Careers

In your third year, you will undertake the Events Live Project, enabling you to integrate your academic knowledge with experiences beyond the classroom and combine your developing knowledge, skills, and personal ideas with transferable skills that can be applied in the workplace, prodigious for your CV.

Your lecturers all have first-hand experience in business and event management. Therefore, you are assured that your course's content will be directly relevant to the demanding, constantly evolving world.

During your studies, there will be the opportunity to participate in the Employability Scheme with the specific objective of enhancing your future employment prospects. This includes CV workshops, interview techniques, career counseling and visits from prospective employers.

BSc (Hons) Business and Hospitality Management

UCAS codes	3 years - 1N22 4 years foundation - NN11
Institution	L63
Location	London
Available starts	September, January, May
Full course info	london.aru.ac.uk/courses

Key Features

- Combine the academic study of the business and hospitality sectors
- Learn from business and hospitality industry professionals
- Develop your knowledge whilst gaining commercial awareness and expertise within the industry

Key Modules

- Managing Quality in Hospitality, Tourism and Events
- Hospitality Management
- Global Hospitality and Tourism Issues
- Hospitality and Venue Management

About this course

The hospitality sector employs 3.2 million people, representing 10% of all employment, 6% of businesses, and 5% of GDP, and yet the sector is continually unlocking its full potential as one of the biggest engines for growth in the economy.

2020 has been a difficult year for hospitality and as 2021 moves forward, consumers remain as eager as ever to visit hospitality venues, and the economy will look to the hospitality sector to spearhead the UK's economic revival as the pandemic ends.

The structure of this course enables an understanding and evaluation of business concepts of management, whilst preparing graduates for the hospitality sector through the extensive use of contemporary case studies, guest speakers and off-site visits. This synthesis allows students to develop their knowledge whilst gaining commercial awareness and expertise within the industry.

Careers

In today's competitive jobs market, graduates need to stand out from the crowd to successfully secure that all-important first full-time job after university.

Your lecturers all have first-hand experience of business, and many continue to work in the hospitality sector. Therefore, the content of your degree will be directly relevant to the demanding, constantly evolving world of contemporary business. Furthermore, you will study business from a practical and academic perspective.

Our lecturers have a wealth of contacts and you'll be studying alongside students from around the world, and we are a proud member of the British Hospitality Association. All great for networking and professional support.

Being one of the most important financial and business centres in the world, London is a world-class hospitality hub, offering the best examples of service and luxury accommodation. Our employability team can assist you to secure a part-time hospitality job, too.

During your studies, there will be opportunities to participate in our Employability Scheme with the specific objective of enhancing your employment prospects. This includes CV workshops, interview techniques, career counselling and visits from prospective employers.

BSc (Hons) Business and Law

UCAS codes	3 years - NM11 4 years foundation - NM12
Institution	L63
Location	London
Available starts	September, January, May
Full course info	london.aru.ac.uk/courses

Key Features

- Study business and law from a practical and academic perspective
- Develop an in-depth understanding of how legal considerations impact management activity
- Expand on practical and transferable legal knowledge and experience from industry professionals

Key Modules

- Law of Contract
- Law of Business Organisations
- Commercial Law
- Law of International Trade

About this course

This intellectually stimulating course addresses broader aspects of business organisation and management culture, while also providing an insight into corporate and consumer legislation, corporate regulation and other legal aspects of business enterprise. You will be equipped with a real understanding of how legal considerations impact virtually every aspect of management activity.

Employers look for business graduates with knowledge and awareness of current issues. This course will teach you about globalisation, sustainability and social change - allowing you to fully understand the factors affecting business. When you graduate you will have a sound appreciation of management practice, this will include human resources, marketing, business law and information management. You will also learn the skills to analyse strategic consumer behaviour.

Careers

The skills you gain from this course will also open opportunities for you in many other professions, including banking, commerce, local and central government, and teaching.

During your studies, there will be the opportunity to participate in the Employability Scheme with the specific objective of enhancing your future employment prospects. This includes CV workshops, interview techniques, career counselling and visits from prospective employers.

BSc (Hons) Business and Tourism Management

UCAS codes	3 years - NN18 4 years foundation - NN14
Institution	L63
Location	London
Available starts	September, January, May
Full course info	london.aru.ac.uk/courses

Key Features

- Combine the academic study of the business and tourism sectors
- Develop the key business skills needed for a successful career in the tourism industry
- Gain commercial awareness and expertise within business and tourism from industry professionals

Key Modules

- Hospitality, Tourism and Events Environment
- Sustainable and Ethical Tourism
- Managing Quality in Hospitality, Tourism and Events
- Managing Human Resources

About this course

Britain's tourism sector is an economic powerhouse. Generating £106 billion a year, employing over 2 million people, supporting thousands of businesses, and making up over 80% of the UK's total visitor economy, the UK's tourism sector is a vital part of the UK and global economy.

Tourism is recognised as a leading sector in the UK government's future economic planning. Along with the national tourism agency 'Visit Britain/Visit England,' they are building a significant and long-lasting strategy to drive economic growth, focusing on increasing productivity through developing skills, career paths, and building seasonality. Tourism is, therefore, driving continual demand for specialist graduates who not only understand both the theories of business and tourism management but are also equipped with practical experience.

This course has been developed to give students the key business skills needed for a successful career in this sector. There is a particular focus on the current challenges facing the tourism industry. These include sustainability, global issues, ethical tourism, diverse competition, and crisis management. Designed to unlock your potential by enhancing both your commercial awareness and specialist subject knowledge, this course is a perfect entrance into this exciting, important, and growing industry.

Careers

In your third year, you will undertake the Tourism and Events Live Project which will enable you to integrate your academic knowledge with experiences beyond the classroom and combine your developing knowledge, skills, and personal ideas to expand transferable skills which can be applied in the workplace. This is prodigious for your CV, and will cement your footing in the industry.

Your lecturers all have first-hand experience of business and hospitality. You are therefore assured that the content of your degree will be directly relevant to the demanding, constantly evolving world of business and tourism.

During your studies, there will be the opportunity to participate in the Employability Scheme with the specific objective of enhancing your future employment prospects. This includes CV workshops, interview techniques, career counselling and visits from prospective employers.

We work with several employers to be able to offer part-time work in conjunction with our courses. On successful completion of this course, you might choose to move onto our postgraduate studies, such as our Master of Business Administration (MBA) International (page 72).

BSc (Hons) Finance and Accounting

UCAS codes	3 years - NN43 4 years foundation - NN17
Institution	L63
Location	London
Available starts	September, January
Full course info	london.aru.ac.uk/courses

Key Features

- Earn the maximum exemptions (9) from the global body for professional accountants
- Learn theoretical and practical aspects of finance and accountancy in a business context
- Gain transferable skills from professionally qualified accountants with varied real-world experience

Key Modules

- Managing Business Performance
- Taxation for Business
- Financial Management in Organisations
- Financial Auditing

About this course

A degree in accounting and finance has long been viewed as an excellent grounding for a career in business, regardless of whether you intend to become a professionally qualified accountant or not.

For students that are already considering undertaking a professional accounting qualification, this course has been structured to provide the maximum possible number of exemptions (9 foundations papers in total) from the professional examinations of the Association of Chartered Certified Accountants (ACCA), the global body for professional accountants.

Whether you want to move into auditing, financial reporting, management accounting or financial services, this could be the course for you. You'll develop subject-specific skills alongside important transferable skills like communication, enterprise, problem-solving and quantitative analysis.

The course syllabus has also been carefully designed to combine both theoretical and practical aspects of finance and accountancy. This enables students to gain an excellent grounding in accounting and finance tools and techniques, together with the wider understanding and real-world insights required by all finance professionals.

Careers

During your studies, there will be the opportunity to participate in the Employability Scheme with the specific objective of enhancing your future employment prospects. This includes CV workshops, interview techniques, career counselling and visits from prospective employers.



It was a challenge, working all year despite the pandemic, but I gained practical knowledge and completed my study at university, it was very rewarding as I was taught by very dedicated, experienced teachers and specialists, and was able to learn from their wealth of industry experience.

Ioana Maria Burzo
BSc (Hons) Finance and Accounting

LLB (Hons) Law

UCAS codes	3 years - M100
Institution	L63
Location	London
Available starts	September, January
Full course info	london.aru.ac.uk/courses

Key Features

- Join the first academic stage of training to become a solicitor or barrister
- Cover the "Foundations of Legal Knowledge" required for a Qualifying Law Degree
- Earn an SRA and BSB-accredited degree

Key Modules

- Public International Law
- Company Law in Context
- Constitutional & Administrative Law
- Civil Litigation

About this course

At ARU London, you can take your first step towards becoming a solicitor or barrister, as our course will qualify you for the next stage of your legal training.

This qualifying law degree, accredited by the Solicitors Regulation Authority (SRA) and the Bar Standards Board (BSB), allows you to progress to the vocational stage of training.

You will study both academic and practical aspects of the law, which not only prepare you for a legal career but will also give you many skills that are highly valued in other occupations. We encourage you to focus on your areas of interest and develop specialisms, such as family law, criminal law, and procedure and/or civil law and litigation.

As you go through our core modules, you'll be developing key knowledge of fundamental features of the UK and EU legal systems, and the context in which the law operates. All this, while engaging in critical analysis with peers, solving legal problems, and undertaking independent research, flexing your ability to construct complex legal arguments.

Careers

If you want to proceed to the vocational stage of training as a barrister or solicitor (Bar Professional Training Course or Legal Practice Course), this LLB is your first step. You might also choose to work in private practice as a paralegal, carrying out many of the tasks and roles of a qualified solicitor.

The skills you gain from this course will also open opportunities for you in many other professions, including banking, commerce, local and central government, and teaching.

Our students go on to a wide range of careers. Some, of course, go on to the next stage of training to become solicitors and barristers. Others go on to work as paralegals. And others use their LLB in a variety of other professions, including banking, commerce, government, and teaching.



Business School



BSc (Hons) Business and Human Resource Management

UCAS codes	3 years - NN16 4 years foundation - NN12
Institution	L63
Location	London
Available starts	September, January, May
Full course info	london.aru.ac.uk/courses

Key Features

- Take part in workplace simulation assessments
- Learn from industry professionals
- Engage with our extensive employability programme

Key Modules

- Managing Human Resources
- Resourcing the Organisation
- Managing the Employment Relationship
- Economics for Business

About this course

The ability to recruit, motivate and manage employees effectively is considered one of the keys to success in business. Furthermore, ensuring that employees develop professionally is essential for achieving competitive advantages, given that people are one of the key resources in any business. This course focuses on the key role of people in a successful business. You will learn to understand the importance of the people behind the business and how they help the business prosper.

Designed to give you a thorough grounding in core business skills and concepts, this degree provides you with in-depth knowledge and understanding of the key aspects of Human Resource Management, including how to source, develop, reward, and utilise employees to deliver strategic effects for organisations of all sizes and types.

Careers

In today's tough jobs market, graduates need to stand out from the crowd to successfully secure that all-important first full-time job after university. We believe your degree from ARU London will enhance your employment prospects significantly. This degree is ideal for students who are interested in a career in managing corporate human resources, management and skills training, management recruitment, and HR consultancy. The course is also suitable for those looking for a rounded business qualification, with an emphasis on people management.



This course will provide you with the most up to date insight into Human Resource Management from academic and industry practice. It will give you a strategic and operational understanding of managing Human Resources in both the UK and global environments, and you will develop your own professional practice and skills.

Kally Kadoglou
Module Lecturer

BSc (Hons) Business and Marketing

UCAS codes	3 years - NN15 4 years foundation - NN13
Institution	L63
Location	London
Available starts	September, January, May
Full course info	london.aru.ac.uk/courses

Key Features

- Develop an understanding of audiences, business structures, modern marketing, and management
- Gain new perspectives from industry professionals
- Learn independently and collaboratively using research methods and key principles of business

About this course

At ARU London, we realise that the marketing function of an organisation is a dynamic, creative and fast-moving process. This course's syllabus evaluates the key marketing skills of forward-thinking, communication, and originality, whilst building core knowledge in the areas of branding, brand management, market research methods, consumer behaviour and digital marketing. Our lecturers are experts in their fields and all have industry experience.

With the growing importance of the online campaign, you will also consider the role of digital marketing in marketing strategy and the key metrics for measuring effectiveness. With marketing knowledge and skills grounded in key business concepts, this course lays the balanced foundations for a successful career.

On successful completion of this course, you might choose to move onto our postgraduate studies, such as our Master of Business Administration (MBA) – International Marketing (pg 73).

Key Modules

- Economics for Business
- Principles and Practice of Marketing
- Marketing Communications
- Digital Marketing

Careers

In today's tough jobs market, graduates need to stand out from the crowd to successfully secure that all-important first full-time job after university. We believe your degree from ARU London will enhance your employability.

The course will prepare you for a career in marketing management in sectors such as FMCG, financial services, telecoms and tourism. You might choose to focus on a specialist area such as advertising and sponsorship, brand and product management or digital marketing. On the other hand, some roles involve the whole marketing mix. Job titles to look forward to include Marketing Executive, Marketing Officer, Marketing Assistant and Brand Manager.



If you work hard, by the end of this module you will be able to confidently apply marketing related theory in a practical way, enhancing your career and business goals. If you work extremely hard, you may well earn a much sought after ARU London Top Achiever award!

Michelle Barned
Module Lecturer

BSc (Hons) International Business Management

UCAS codes	3 years - N120 4 years foundation - N101
Institution	L63
Location	London
Available starts	September, January, May
Full course info	london.aru.ac.uk/courses

Key Features

- Develop knowledge on contemporary global trends
- Explore the functional sides of business, from finance to marketing
- Gain insight from real-world case studies

About this course

In an increasingly interconnected world, studying business from an international perspective makes sense for all those that seek a management career within a business, whether it is a start-up microenterprise or within a global multinational company.

In today's international market, businesses need employees who understand globalisation, sustainability and intercultural communication. Learn more about these complex issues and their management through real-world case studies, market researched pedagogy and a strong theoretical backbone at ARU London.

The taught modules cover all the major functional areas of business from finance and marketing to human resources and information systems. Building on this essential core knowledge, this degree examines and develops an understanding of the cultural, ethical and interpersonal challenges that arise within today's multicultural global business environment, from SMEs and how they compete on a global level; ethics and social responsibility; to technology and how organisations use information to support global operations and deliver competitive advantage.

The final year "Major Project" encourages you to utilise both the skills and knowledge learnt during the course and combine them with current academic research that will further develop your professional expertise and career prospects.

This allows you to gain a broad understanding of the key areas of business which will enable you to appreciate the importance of the different functions.

Key Modules

- Operational and Project Management
- Legal Aspects of Business
- Managing Human Resources
- Managing International Business

Careers

In today's tough jobs market, graduates need to stand out from the crowd to successfully secure that all important first full-time job after university. We believe your degree from ARU London will enhance your employability. On successful completion of this course, you might choose to move onto our postgraduate studies, such as our MBA – International or our MSc – International Project Management (pg 72 and 75).

Healthcare School



BSc (Hons) Business and Healthcare Management

UCAS codes	3 years - 1N11 4 years foundation - N100
Institution	L63
Location	London
Available starts	September, January, May
Full course info	london.aru.ac.uk/courses

Key Features

- Discover firsthand the business side of healthcare environments
- Develop business strategies with professionals in the field
- Participate in major projects within business and healthcare

Key Modules

- Service Operations Management
- Innovation and Entrepreneurship in Healthcare
- Principles of Health Informatics
- Contemporary Themes in Healthcare Policy and Practice

About this course

Realising your dreams has never been easier. Whether you want to work within the public or private healthcare sector, or set out as an entrepreneur, studying on our Business and Healthcare Management course will impart the knowledge and employability skills that can fast-track you onto the healthcare landscape.

This course will provide you with a range of opportunities to develop the attitudes, abilities and competencies needed to work in a health and social care environment, both home and international. The course will also encourage entrepreneurship as you will have opportunities to develop the skills required to analyse complex contemporary business and healthcare organisations. Business analysis is a critical factor in determining organisational options as it forms the basis for negotiating, planning and execution to deliver on organisational goals.

Employers from the healthcare sector have been directly involved in the design and development of this course. Collaborations with these sector partners are used to explore those skill sets that employers are most interested in and to constantly ensure they are embedded within the delivery of the course. You will also benefit from lecturers who have significant experience across the industry.

On successful completion of this course, you might choose to move onto our postgraduate studies, such as our Master of Business Administration (MBA) – Health and Social Care (pg 74).

Careers

During your studies, there will be the opportunity to participate in the Employability Scheme with the specific objective of enhancing your future employment prospects. This includes CV workshops, interview techniques, career counselling and visits from prospective employers.



Working on a major project in my final year helped to improve my research skills, and also helped me to statistically analyse the financial performance of a company. This is useful for my current role, as working with data requires you to have strong attention to detail to identify any areas needing improvement. The skills I developed during my degree have been useful for my experiences at work, and I would recommend using your degree experiences in your interviews in the future.

Reem Gulamali,
BSc (Hons) Business and
Healthcare Management

BSc (Hons) Health and Social Care

UCAS codes	3 years - L500 4 years foundation - L501
Institution	L63
Location	London
Available starts	September, January, May
Full course info	london.aru.ac.uk/courses

Key Features

- Develop your passion for helping others
- Explore care management skills for diverse health conditions and social circumstances
- Further your knowledge of complexities within healthcare institutions and the sector

Key Modules

- Significant Life Events and Coping
- Safeguarding in Practice
- Contemporary Themes in Healthcare Policy and Practice
- Leadership and Change Management

About this course

Employers from the healthcare sector have been directly involved in the design of this course. Collaborations with these sector partners are used to explore those skill sets that employers are most interested in and to constantly ensure they are embedded within the delivery of the course. You will also benefit from lecturers who have significant industry experience.

Our location in London, with world-class private and public healthcare, boasts more than 90 NHS hospitals and a host of private hospitals and social care organisations, offering you unrivalled opportunities in the sector.

This course will provide you with a range of opportunities to develop the attitudes, abilities and competencies needed to work in a health and social care environment, both home and abroad. Today's health and social care organisations are exciting, complex, and varied. Therefore, successful practitioners need to be innovative and resilient. This course will offer you opportunities to use real-life case studies that draw on prioritisation, negotiation, and care planning skills.

You will graduate with a solid sectoral awareness and sound understanding of the interplay between health and social circumstances. This should enable you to take advantage of the many jobs skills that draw on these, and any entrepreneurial opportunities that the sector offers.

Careers

The healthcare sector currently employs over 4 million people. With 18% growth projected for 2021, graduates who can demonstrate an in-depth knowledge of the relevant business concepts and first-hand experience in the sector will be in great demand ongoing.

We also offer an MBA in Health and Social Care (pg 74) for postgraduate study, to further your knowledge in the field and enhance your pursuit of a career in health and/or social care in one of the regulated professions such as social worker, nurse, physiotherapist, physician associate, etc..



Postgraduate Degrees



While at ARU London, you'll be taught by inspiring tutors and lecturers, many of whom are active researchers and industry contributors.

Quick facts

Campus: London

Duration: 1 Year (Full-time) or 2 years (Part-Time)

Available Starts: September, January, May

Postgraduate open days

Engage virtually or come and see for yourself by touring the campus, meeting students and lecturers, and discovering how our courses could make all the difference to your career on our open days.

Please check our website for details about future open day dates london.aru.ac.uk/discover-ar-london/events

If you studied for an undergraduate degree at any ARU campus, we offer £2,000 off your entire course fee when you enroll as a postgraduate student with us. Head to page 39 to find out more about scholarships.



Studying a postgraduate degree at ARU London

All of our degrees have been developed by academics, together with senior industry executives and professional associations, to encapsulate the requirements of today's international business world.

The degrees will be delivered through a world-class faculty and feature an interactive learning approach with teaching delivered through creatively designed lectures, workshops and seminars. There will be opportunities to hear guest lectures from entrepreneurs, senior executives, and leading commentators in the sectors. Visits will be arranged to multinational enterprises, small or medium-sized enterprises, not-for-profit organisations, and government agencies.

Our postgraduate degrees provide today's business leaders with an opportunity to enhance and update their technical skills and knowledge, differentiate themselves in the job market, and support a bridge to a new and/or different career.

Our MBA and MSc degrees can be undertaken full-time or part-time. They can be completed in just 12 months by attending full-time, comprising of two evenings a week over three trimesters, together with thirty-four Saturdays. Our part-time option will take 24 months, spread over six trimesters.

MBA International

Institution	L63
Location	London
Available starts	September, January, May
Full course info	london.aru.ac.uk/courses

Key Features

- Study in-depth complexities of international businesses of varying size, SME to conglomerates
- Review and evaluate business management, structures, and innovation
- Explore how international business is affected by political and cultural changes

Key Modules

- International Leadership and Enterprise
- International Finance
- Strategic Marketing and New Venture Development
- Strategic Management in a Global Context

Careers

This degree has been developed by academics, together with senior industry professionals, to encapsulate the exact requirements which are required by global businesses. The degree is designed for professionals who are in management, or executive management positions, and who are seeking to broaden both their knowledge and expertise. The course has also been designed to fulfil employer's requirements and to progress an applicant's career. Moreover, an MBA will provide the opportunity to progress to a DBA or PhD. During your studies, there will be the opportunity to participate in the Employability Scheme with the specific objective of enhancing your future employment prospects. This includes CV workshops, interview techniques, career counselling and visits from prospective employers.



The Finance and Project Management modules were invaluable as I was taught how to professionally draft and execute reports on Excel. This has proven to be a crucial skill in my current role, as a large responsibility of mine is to undertake important audits throughout the year using Excel spreadsheets.

Memory Kwablah
MBA International

About this course

This degree is designed for professionals who are seeking to improve their management and leadership skills and broaden their theoretical knowledge of business and management. Over 12 or 24 months, students will acquire a deep knowledge of all the key business functions. Participants will gain a greater appreciation of the significance of the interrelationship of functional areas to the overall success of a business, in international, national and local markets.

This degree offers students the opportunity to study at a postgraduate level, while maintaining and enhancing their contribution to their employer. We recognise that today business is conducted across international boundaries and that globalisation is a phenomenon that impacts all organisations. Therefore, the focus of the degree is on the specific challenges facing organisations that have global operations, or that transact business internationally. The degree will also support the development of a range of transferable executive skills including leadership; strategic decision making; problem-solving; change management, creativity, innovation and entrepreneurship; finance; operations management; marketing and human resource management.

MSc International Marketing

Institution	L63
Location	London
Available starts	September, January, May
Full course info	london.aru.ac.uk/courses

Key Features

- Explore the digital landscape of global marketing
- Gain insights and join discussions on consumers and marketing relationships
- Develop key analysis, audience reflection, brand strategy, and campaign planning skills

Key Modules

- International Marketing, Innovation and E-Commerce
- Understanding the Global Customer
- Strategic Marketing and New Venture Development
- Brand Psychology

About this course

This postgraduate degree is designed for marketing professionals and entrepreneurs who aim to improve their employability skills and theoretical knowledge of business and marketing. You will develop the skills and knowledge needed to develop a career in marketing. The course has been designed for today's modern marketer. Modules have been chosen to reflect the needs of modern marketing professionals, specifically digital marketing; understanding the global customer and brand psychology.

The degree modules cover a wide range of aspects of marketing and business. The strategic marketing and new venture development module will give you the practical skills to launch a new product or service onto the market, this module will be delivered in conjunction with the more traditional dissertation which will develop the academic skills required of a postgraduate student.

The degree boasts a team of exemplary academics coupled with external industry experts. Content and delivery methods are exciting, relevant and rewarding.

Each of the modules will examine three common and integrated themes:

- Internationalisation
- Digital Marketing
- Entrepreneurship

Careers

There is no better way to enhance your marketing skillset and experience than studying for a degree designed towards the modern practices of marketing. This degree has been developed by academics, together with senior industry professionals, to encapsulate the exact requirements that are required by global marketing organisations. Preparation for an executive role is implicit throughout the degree, through delivering exciting, relevant, and forward-thinking modules that will give students the skills and knowledge to fulfil their potential and further their careers. Moreover, an MSc will provide the opportunity to progress to a DBA or PhD, and we can advise on your next steps with these too.

During your studies, there will be the opportunity to participate in the Employability Scheme with the specific objective of enhancing your future employment prospects. This includes CV workshops, interview techniques, career counselling and visits from prospective employers.

MBA

Health and Social Care

Institution	L63
Location	London
Available starts	September, January, May
Full course info	london.aru.ac.uk/courses

Key Features

- Explore commercial, managerial, legal, marketing, and operational aspects relevant to HSC sectors
- Gain skills to manage diverse healthcare organisations
- Develop an understanding of public, private, and voluntary-aided industry healthcare work

Key Modules

- Operations and Major Incident Management
- Managing Finance in Health and Social Care Organisations
- Marketing and Demand Management in Health and Social Care
- Entrepreneurship and Innovation Management

About this course

Providing you with knowledge and understanding of strategic management, as well as practical insight into contemporary issues in Health and Social Care organisations, this degree will enable you to take advantage of the many strategic leadership and entrepreneurial opportunities that the sector offers.

As the largest sector in the UK, health and social care plays a crucial role in supporting the economy by maintaining the physical and mental health of the population. The recent global pandemic has highlighted the importance of the management of health and social care delivery.

Our MBA Health and Social Care degree addresses the specific demands placed on professionals who are responsible for leading policy, strategy and services in their organisation; be it in the public, private or voluntary-aided sector. You will study the key management disciplines within a health and social care context, including business planning and finance, project and operations management, healthcare service improvement and leadership. Our lecturers have extensive experience teaching, training, and working in the health and social care management sector. You are assured that the content of your studies will be directly relevant to the constantly evolving world of contemporary health and social care management.

Careers

Whether you are a supervisor, manager, policymaker or clinician wishing to know more about healthcare management, this degree will make a significant impact on your current and future career.

It is estimated that the sector employs over 4 million people, which will grow by 18% by 2026; furthermore, the current staffing shortfall is around 300,000 and is expected to top 450,000 by 2030. This MBA Health and Social Care qualification will enhance your employability and career development, successfully emphasising your skills amongst the crowd across the healthcare sectors, and enable you to capitalise on opportunities using your degree knowledge and experience.

MSc

International Project Management

Institution	L63
Location	London
Available starts	September, January, May
Full course info	london.aru.ac.uk/courses

Key Features

- Earn an APM-accredited degree
- Gain skills to lead cross-cultural workforces
- Work on international project management projects

Key Modules

- Project Risk Management
- Legal and Ethical Aspects of Project Management
- Applied Project Management Solutions
- Strategy in the Public and Private Sectors

About this course

Realising your dreams has never been easier; whether you want to work within the public sector or the private sector or set out as an entrepreneur, studying on our International Project Management degree will reassure stakeholders that you have sound knowledge of project management; as the degree meets the technical requirements of the APM chartered project professional competency framework.

Professional project managers are in significant demand in the UK and internationally. In the current environment, agile project managers have been able to escalate and transform projects faster than before, such as with COVID-19 vaccine delivery. The Programme Leader together with a team of multi-disciplinary academics have designed this course with the needs of modern professional project managers in mind. This postgraduate degree will enable you to explore project management in a wide range of contexts, including long-run public sector infrastructure projects and short-to-medium-term projects in private sector businesses, public sector organisations and not-for-profit organisations.

The degree content is balanced, with critical modules on research, leadership, law, innovation, change management and an understanding of the global project management environment. The degree has a practical emphasis rather than an overtly academic or theoretical approach, it is pivotal because the project management function is required to deliver hard and measurable results.

Careers

Career opportunities for our MSc International Project Management degree graduates exist in the public, private and voluntary aided sectors. Some of our alumni have gone on to be project management professionals in a wide range of organisations including consultancy, construction and infrastructure, retail, IT, supply chain and logistics, real estate, or owners of their start-up consultancies. Others have gone on to doctoral studies or careers in academia.



APM Accreditation is a widely recognised mark of quality for organisations, training providers and academic institutions. It offers assurance for those wanting to access the best project management professional development services available.



Small Print

ARU London processes personal data and sensitive personal data on all applicants and enrolled students in computer and paper-based administrative systems. All such data is processed in accordance with UK Data Protection Legislation. For further information on the processing of your personal data, please view our Privacy Policy at london.aru.ac.uk/contact-us/privacy-and-cookies

This information document may include links to external websites run by other organisations. ARU London is not responsible for the privacy practices of these other websites, so you should read their privacy policies carefully.

Before you apply to ARU London

This prospectus describes the courses and awards offered by ARU London. It was prepared in September 2021, and refers to courses which will be available in September 2021 and January 2022. ARU London has taken considerable care in the preparation of this prospectus to ensure its accuracy at the time of printing, but please refer to our website which contains further information about each course, including any updates to the course itself. The online course catalogue can be viewed at london.aru.ac.uk/courses

ARU London endeavours to take all reasonable steps to provide the education services in the manner set out in this prospectus. It does not, however, guarantee the provision of such services. In exceptional circumstances, it may be necessary to make changes to the education services due to industrial action, change in government policies, changes to funding or the law, for staffing, financial, regulatory or academic reasons, or other events beyond the control of ARU London which interfere with its ability to provide education services. ARU London will take reasonable steps to minimise the resulting disruption to those services. ARU London cannot be held responsible for failure/delay in performing obligations caused by things beyond its reasonable control, including, but not limited to, industrial action.

Notice to potential students

Should you become a student at ARU London, an offer letter will be sent to you, and this shall constitute a term of any contract between you and ARU London. Any offer of a place made to you by ARU London is made on the basis that, in accepting such an offer, you signify your consent and agreement to abide by the Rules, Regulations and Procedures for Students as a term of any such contract. You will also receive additional documents detailing the teaching, examination, assessment and other education services offered by ARU London. In particular, you will be invited to be bound by the Rules, Regulations and Procedures for Students, a copy of which can be obtained from the Secretary & Clerk's Office or at aru.ac.uk/keydocuments

Complaints

In the event that you feel that any information in this prospectus is inaccurate or misleading, you should write to:

Head of Marketing, ARU London
19 Charterhouse Street, London EC1N 6RA



Course Index

Undergraduate courses

Business and Events Management (BSc).....	55
Business and Hospitality Management (BSc).....	56
Business and Law (BSc).....	57
Business and Tourism Management (BSc).....	58
Finance and Accounting (BSc).....	59
Law (BSc).....	60
Business and Human Resource Management (BSc).....	63
Business and Marketing (BSc).....	64
International Business Management (BSc).....	65
Business and Healthcare Management (BSc).....	67
Health and Social Care (BSc).....	68

Postgraduate courses

International (MBA).....	72
International Marketing (MSc).....	73
Health and Social Care (MBA).....	74
International Project Management (MSc).....	75

 london.aru.ac.uk

 @LondonARU

 @ARULondon

 ARU London

 AngliaRuskinUniversityLondon



© ARU London 2021