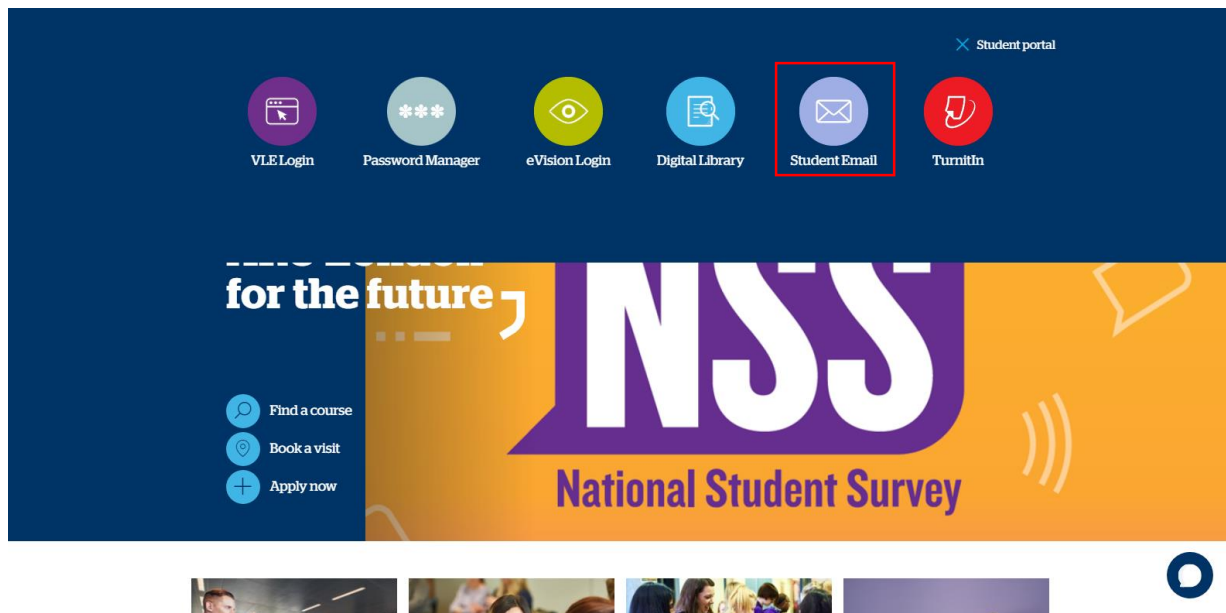


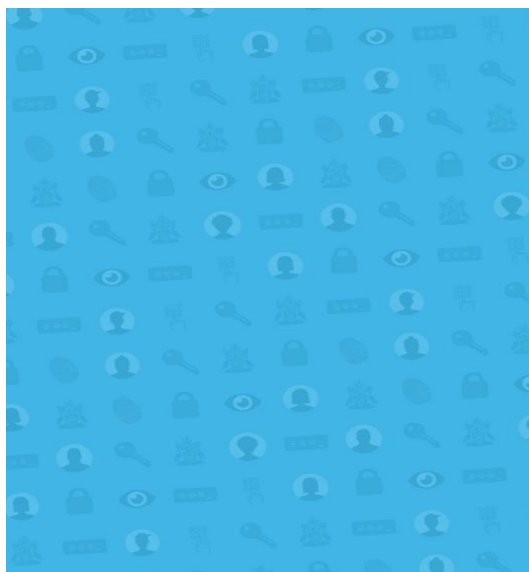
# Downloading Microsoft Office

**Step 1: Go to [lca.anglia.ac.uk](http://lca.anglia.ac.uk) and select student portal to get access to all your learning platforms, click on 'Student E-mail'.**

## Student portal



**Step 2: Login to your Student E-mail using your e:Vision username e.g. [abc123@student.anglia.ac.uk](mailto:abc123@student.anglia.ac.uk) and your e:Vision password**



Sign in with your Full Username

**Students:** [abc123@student.anglia.ac.uk](mailto:abc123@student.anglia.ac.uk)  
**Staff:** [abc123@anglia.ac.uk](mailto:abc123@anglia.ac.uk)

Sign in

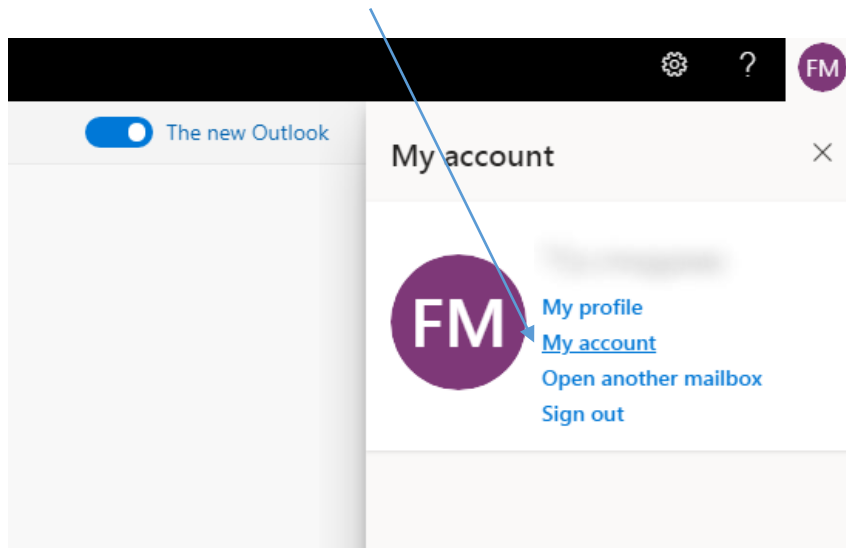
Need help logging in?



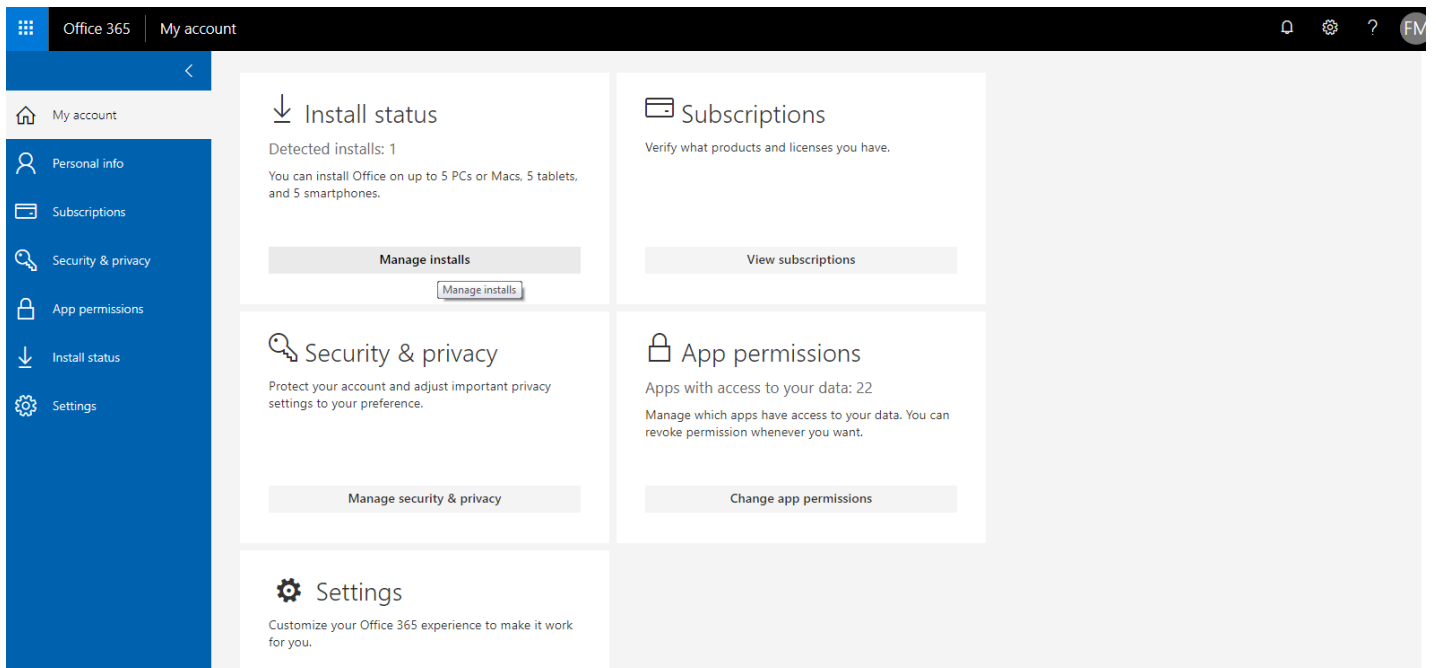
Students

For IT Support please contact us via:  
Phone: [01245 684357](tel:01245684357)

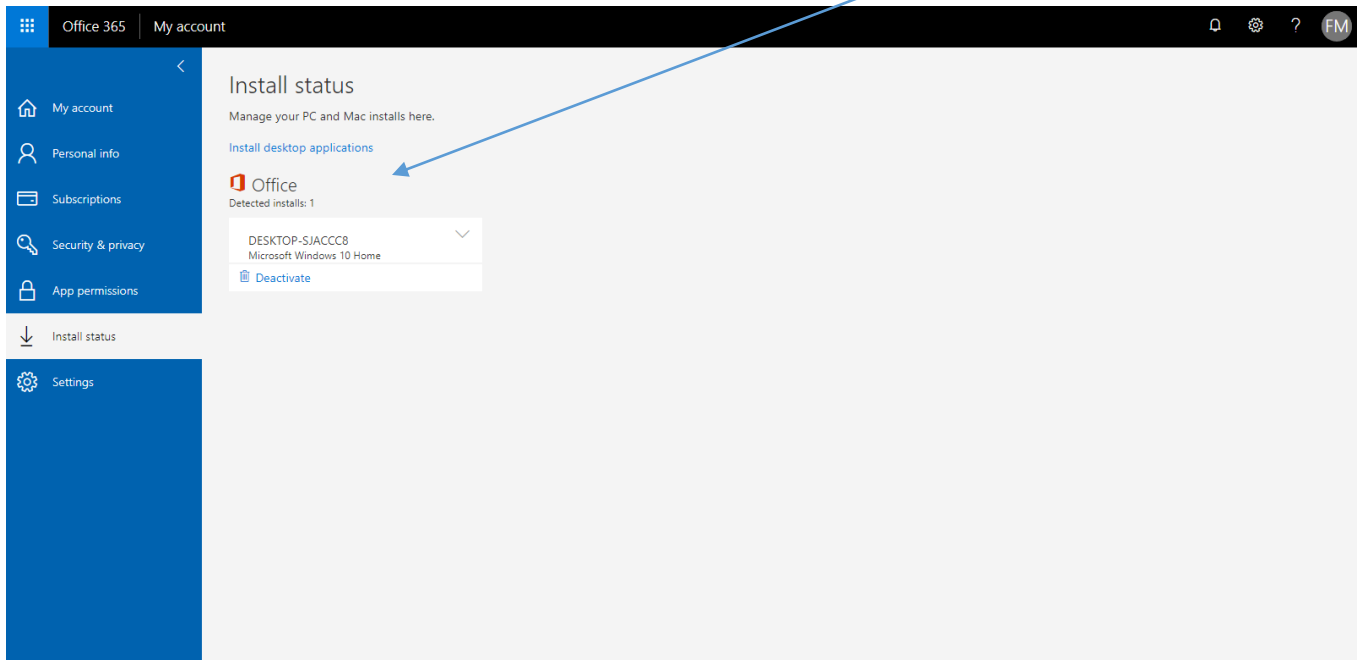
**Step 3: Once signed in, click on my account.**



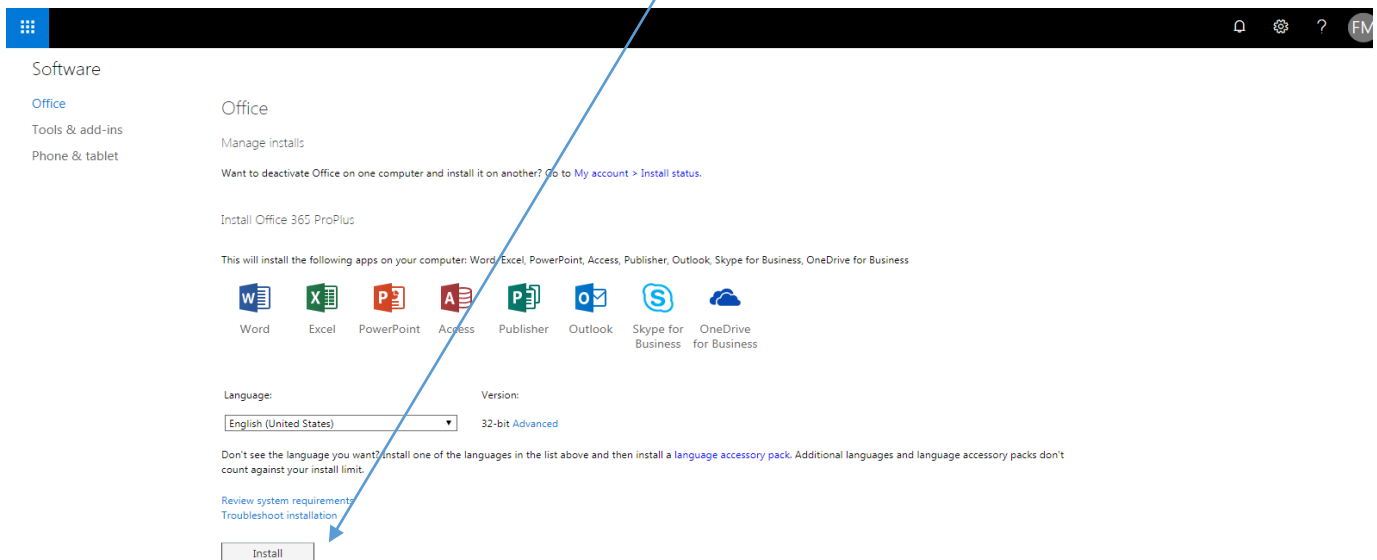
**Step 4: Once in my account section, click on manage installs.**



**Step 5: You should now see the following section. Read the terms and conditions and Microsoft Privacy Policy and click install.**



**6: You should now see the following section. Read the terms and conditions and Microsoft Privacy Policy and click install.**



**7. Office apps will now be activated and you should see that they are being set up in your account.**

**\*\*For more information or further assistance on Microsoft Office,  
please contact the LRC or the iCentre\*\***