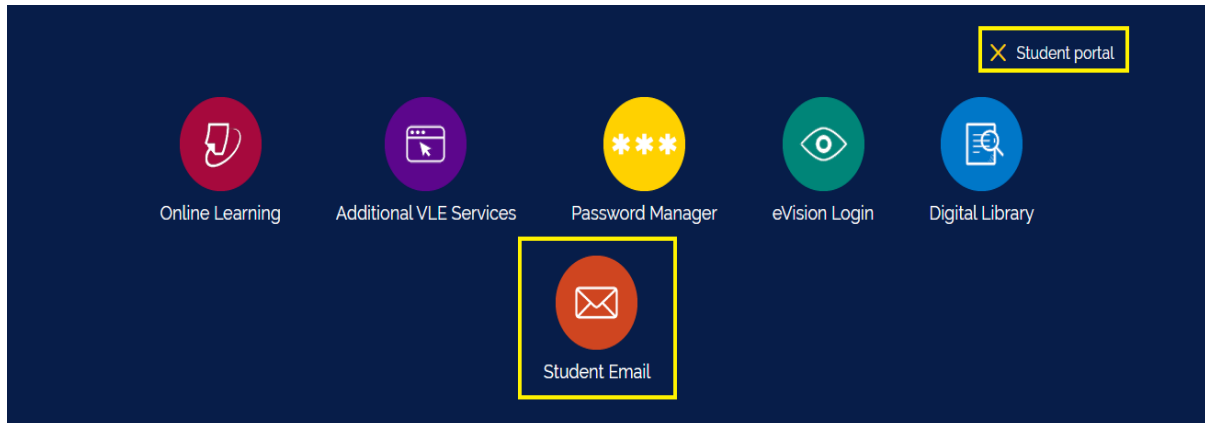


# Downloading Microsoft Office



## Step 1:

Go to <https://london.aru.ac.uk/> and select 'Student Portal' to get access to all learning platforms, then click on 'Student Email'.



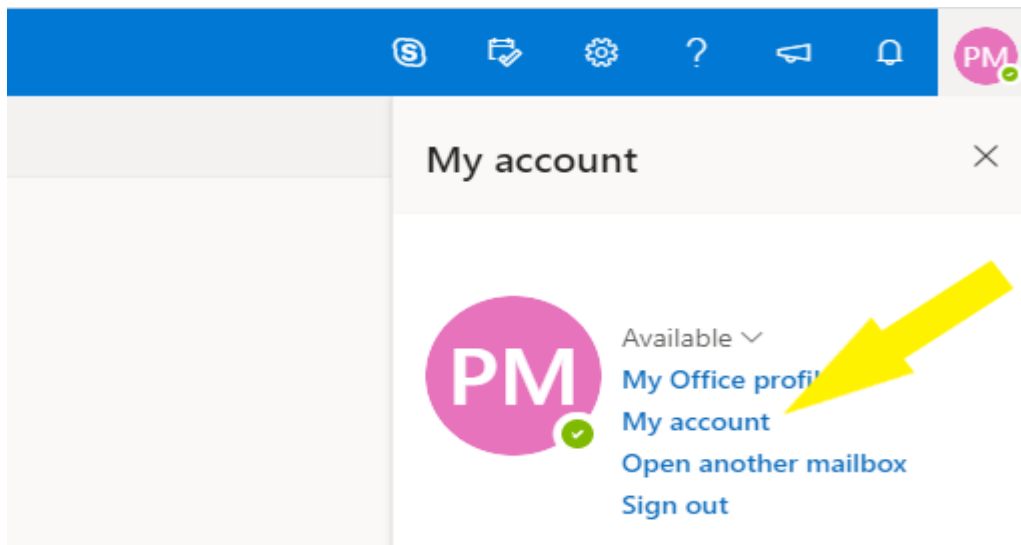
## Step 2:

Login to your student email using your **e:Vision** username e.g. abc123@student.aru.ac.uk and your **e:Vision** password



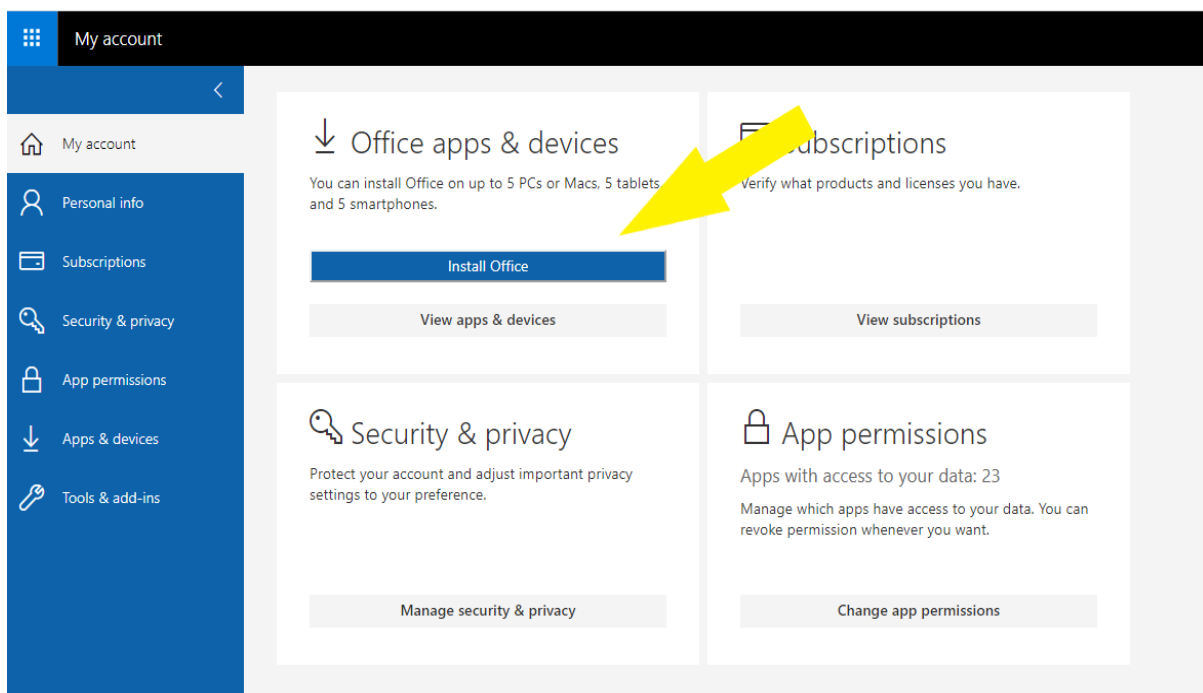
### Step 3:

Once signed in, click on 'My account'.



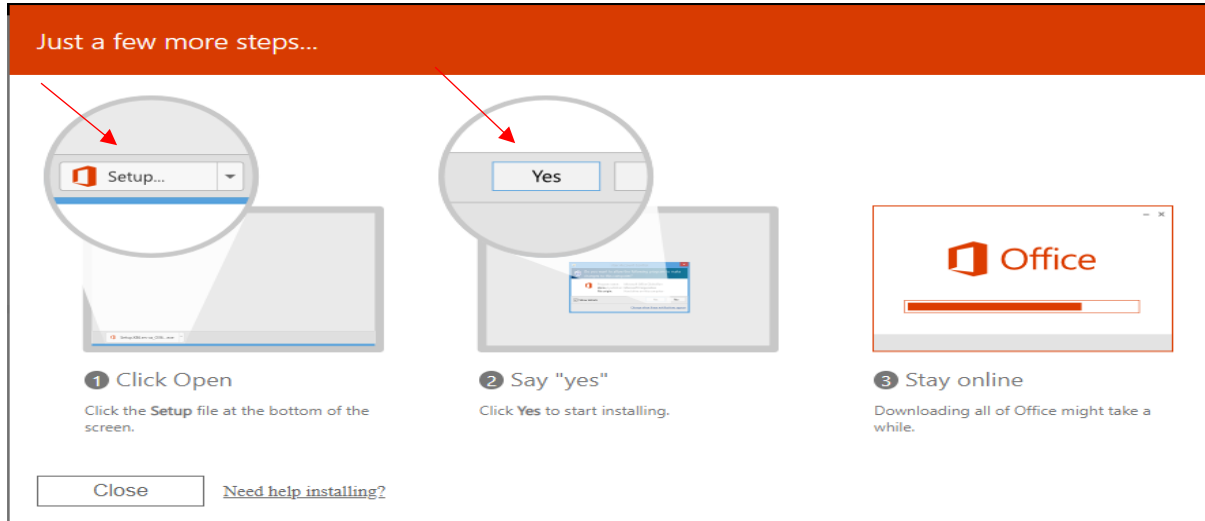
### Step 4:

In the "My Account" section, click on 'Install Office', the file will start downloading.



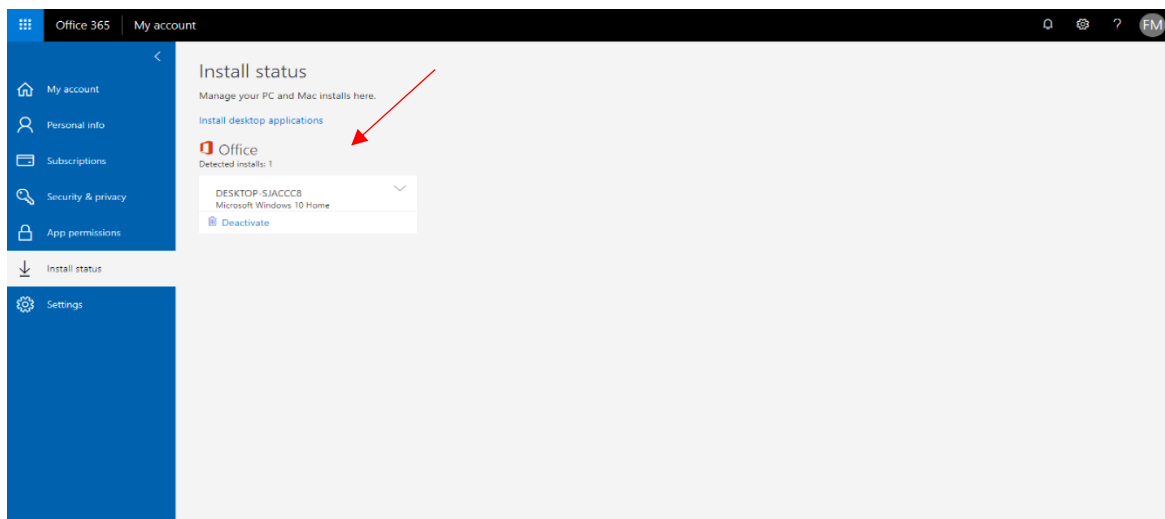
## Step 5:

Once the file has finished downloading, press 'Setup' and then 'Yes'. The installation process will start automatically.



## Step 6:

After installation, Microsoft Office will appear as activated on your student email account. You will also be able to see all Microsoft Office apps on the device you are using.



**After downloading Microsoft Office, to login to any Microsoft Office app you will have to use your student email login details, e.g. abc123@student.aru.ac.uk and your e:Vision password**

For more information or further assistance on Microsoft Office, please  
contact the iCentre:

[iCentre@london.aru.ac.uk](mailto:iCentre@london.aru.ac.uk)